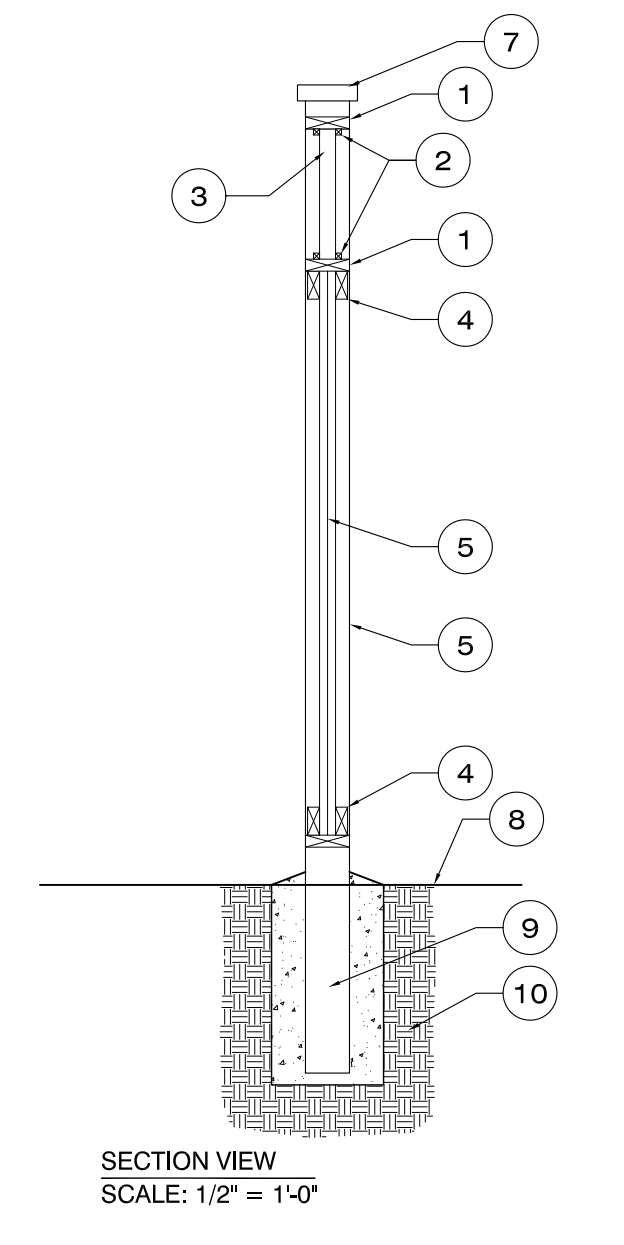
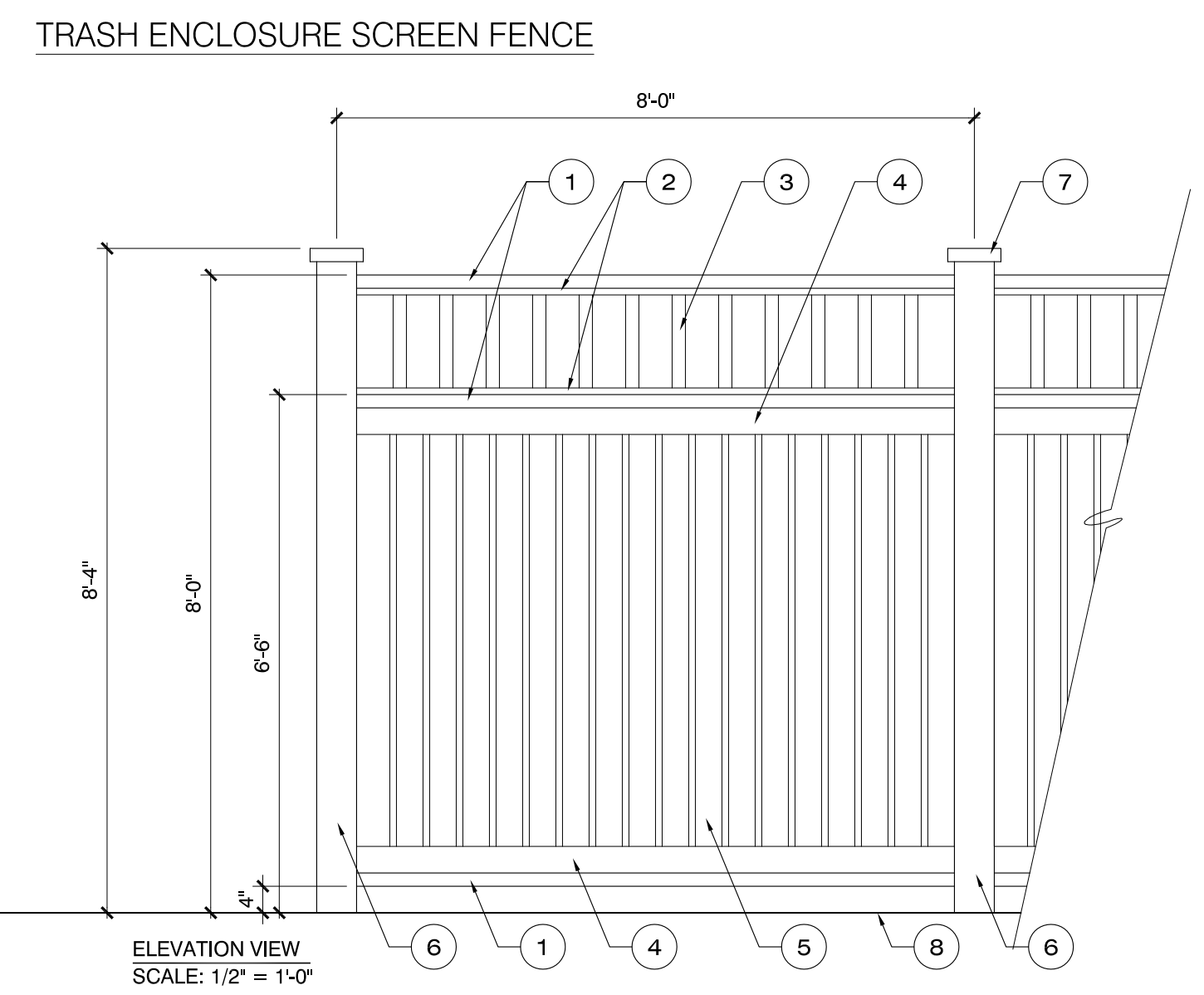
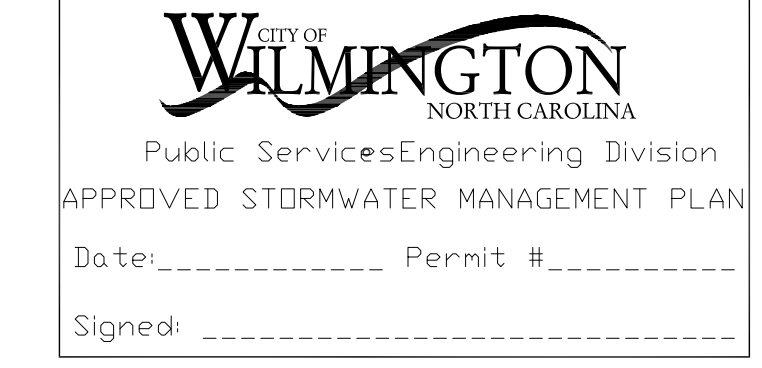


Approved Construction Plan

Name	Date
Planning	
Public Utilities	
Traffic	
Fire	



- LEGEND**
1. 2 x 6 CAP
 2. 1 x 1 NAILER
 3. 2 x 2 PICKET
 4. 2 x 4 STRINGER
 5. 1 x 6 VERTICAL BOARDS - 1" OVERLAP
 6. 6 x 6 POSTS AT 8'-0" O.C.
 7. DECORATIVE POST CAP
 8. FINISH GRADE
 9. CONCRETE FOOTING
 10. COMPACTED SUBGRADE
- NOTES:**
 • PAINT COLOR: TO BE SELECTED
 • TREAT ALL EXPOSED SURFACES WITH (2) TWO COATS MOISTURE-PROOF PRIMER AND (2) COATS ENAMEL.
 • ALL CONNECTORS, FASTENERS AND OTHER HARDWARE SHALL BE HOT DIPPED GALVANIZED

SITE DATA

ADDRESS	2120 S. 17TH STREET
PARCEL ID	R06011-002-019-000
PROPOSED USE	STRUCTURED EMPLOYEE PARKING DECK
EXISTING ZONING	O&I - OFFICE AND INSTITUTIONAL, SPECIAL USE
PARCEL AREA	4.6 AC (200,376 SF)
CAMA LAND USE	URBAN

LANDSCAPE REQUIREMENTS

REQUIRED	PROVIDED	
PARKING LOT CANOPY COVERAGE (12,764 SF X 25%)	3,191 SF, 5 TREES (1 SHADE TREE = 707 SF) 1 SM. SHADE TREE = 314 SF)	3,692 SF, 10 TREES 1 LARGE SHADE TREE (707 SF) 1 SMALL SHADE TREE @ 50% (157 SF) 8 LARGE SHADE TREES @ 50% (2475 SF)
STREET YARD PLANTING PRIMARY STREETYARD S. 17th STREET	5,778 SF (321 LF X 18) 10 (1/600 SF)	7,288 SF 15 PROPOSED TREES
TREES REQUIRED	60 (6/600 SF)	85 PROPOSED SHRUBS
FOUNDATION PLANTING	NORTH (258 LF X 53 X .12) 1,641 SF WEST (183 LF X 53 X .12) 1,164 SF	2,105 SF 2,063 SF

TREE REQUIREMENTS PER DISTURBED ACRE
 15 TREES PER DISTURBED ACRE MUST BE RETAINED OR PLANTED ON SITE.

REQUIRED: 2.0 ACRES DISTURBED X 15 TREES = 30 TREES REQUIRED
 PROVIDED: 38 TREES PLANTED - REFER TO PLANTING LEGEND, THIS SHEET**
 TOTAL: 38 TREES PROVIDED

PLANT SCHEDULE

TREES	BOTANICAL NAME / COMMON NAME	CONT	CAL	RANGE	QTY
Forest Pansy Redbud	Cercis c. Forest Pansy TM / Forest Pansy Redbud	B & B	3" CAL	8'-10' HT	12
Eagleston Holly	Ilex x attenuata 'Eagleston' / Eagleston Holly	B & B	3" CAL	8' HT	15
Southern Live Oak	Quercus virginiana / Southern Live Oak	SPADED	6" CAL	10'-12' HT	13
Emerald Green Arborvitae	Thuja o. 'Emerald Green' / Emerald Green Arborvitae	15 GAL		8' HT	13

SHRUBS	BOTANICAL NAME / COMMON NAME	SIZE	RANGE	QTY
Wintergreen Boxwood	Buxus m. 'Wintergreen' / Wintergreen Boxwood	3 gal	12'-18" HT	63
White Camellia	Camellia sasanqua 'Hana Jiman' / White Camellia	7 gal	3'-4' HT	7
Dwarf Yaupon	Ilex vomitoria 'Nana' / Dwarf Yaupon BHI NATIVE	3 gal	18'-24" HT	33
Wax leaf ligustrum	Ligustrum j. 'Recurvifolium' / Wax leaf ligustrum	3 gal	30'-36" HT	36
Pink Muhly	Muhlenbergia capillaris / Pink Muhly	3 gal	18'-24" HT	110

GROUND COVERS	BOTANICAL NAME / COMMON NAME	SIZE	RANGE	SPACING	QTY
Liriope gigantea	Liriope gigantea / Giant Liriope	1 GAL	12'-18" HT	24" o.c.	540
Big Blue Lilyturf	Liriope muscari 'Big Blue' / Big Blue Lilyturf	1 GAL	12'-15" HT	18" o.c.	549
Asiatic Jasmine	Rosa x 'Noaschnee' / Flower Carpet Rose	3 GAL	12'-18" HT	36" o.c.	304
Asiatic Jasmine	Trachelospermum a. 'Asiatic' / Asiatic Jasmine	1 qt	6'-12" HT	12" o.c.	456

SOD/SEED	BOTANICAL NAME / COMMON NAME	SIZE	RANGE	SPACING	QTY
Bermuda Grass	Cynodon dactylon / Bermuda Grass	sod			14,102 sf

SYMBOL LEGEND

- STREETYARD PLANTING AREA
- EXISTING TREE TO REMAIN

GENERAL PLANTING NOTES

- THIS WORK INCLUDES, BUT IS NOT LIMITED TO THE FURNISHING OF ALL LABOR, MATERIALS, EQUIPMENT, FINAL GRADING, SEEDING, SOIL AMENDMENTS, ETC., AS MAY BE REQUIRED FOR A COMPLETE INSTALLATION.
- QUANTITIES SHOWN IN PLANT LISTS ARE FOR CONVENIENCE ONLY. PLANS SHALL GOVERN.
- THE LANDSCAPE CONTRACTOR SHALL NOTIFY THE LANDSCAPE ARCHITECT OF ANY DISCREPANCIES IN PLANT LOCATIONS OR INSUFFICIENT PLANT QUANTITIES DUE TO DIFFERENCES IN PLAN AND ACTUAL FIELD CONDITIONS.
- ALL TREE AND SHRUB MATERIAL SPECIFICATIONS MUST MEET STANDARD INDUSTRY SPECIFICATIONS FOR THE CONTAINER SIZE INDICATED. DOWNSIZING OR SUBSTITUTION OF PLANT MATERIAL WITHOUT PRIOR APPROVAL OF LANDSCAPE ARCHITECT WILL NOT BE ALLOWED.
- ALL LANDSCAPE AREAS SHALL BE GRADED TO A SMOOTH EVEN SURFACE PRIOR TO ANY PLANT INSTALLATION. ALL PLANT MATERIALS SHALL BE INSTALLED USING GOOD HORTICULTURAL PRACTICES IN ACCORDANCE WITH THE PLANS AND DETAILS.
- TREES SHALL NOT BE PLANTED CLOSER THAN FOUR (4) FEET FROM ANY WALKWAY OR PUBLIC SIDEWALK EXCEPT WHERE TREE WELLS OR PARKWAYS ARE PROVIDED IN THE SIDEWALK AREA. ALL TREE PLANTED WITHIN FIVE (5) FEET OF WALKS OR PUBLIC UTILITIES SHALL RECEIVE DEEP ROOT BARRIERS.
- TREE LOCATIONS SHOWN ON PLAN MAY REQUIRE ADJUSTMENT IN THE FIELD, WHENEVER FEASIBLE. TREES SHOULD BE PLANTED A MINIMUM OF TEN (10) FEET FROM ALL UNDERGROUND UTILITIES, STREETLIGHTS, HYDRANTS, AND OUT OF DRAINAGE FLOW LINES. SHOULD THIS NOT BE POSSIBLE, CONTACT THE LANDSCAPE ARCHITECT FOR DECISION ON PLACEMENT.
- ALL TREES IN TURF AREAS SHALL HAVE 12" MIN. CLR. CIRCUMFERENCE AROUND THE TRUNK BASE. PROVIDE 2" MIN. THK. MULCH AT BASE OF TRUNK.
- GROUND COVER TYPE SHOWN SHALL BE PLANTED IN ALL SHRUB AREAS AS SPECIFIED ON PLANS. GROUND COVER SHALL BE PLANTED AT 8" ON-CENTER UNIFORM TRIANGULAR SPACING, AND SHALL BE CONTINUOUS UNDER ALL TREE AND SHRUB MASSSES AS SHOWN ON PLAN.
- MATURE PLANTINGS SHALL NOT INTERFERE WITH UTILITIES AND TRAFFIC SIGHT LINES.
- ALL PLANTING AREAS SHALL BE MULCHED WITH PINESTRAW, EXCEPT FOR AREAS PLANTED WITH GROUND COVER. ALL AREAS PLANTED WITH GROUND COVER SHALL BE MULCHED WITH HARDWOOD MULCH.

SCALE: 1" = 30'

DATE: 02/02/2017

PHASE:

JOB NUMBER: 680-04

DESIGNED BY: MLD

DRAWN BY: MAS

CHECKED BY: JWM

SHEET TITLE: PLANTING PLAN

SHEET NUMBER: 1.1

OF 1 SHEETS

MIHALY LAND DESIGN
 PLANNING + LANDSCAPE ARCHITECTURE
 330 MILITARY CUTOFF RD., Suite A3
 WILMINGTON, NC 28405 910.392.4355

CLIENT
NORRIS & TUNSTALL ENGINEERS
 902 MARKET STREET
 WILMINGTON, NC 28401
 (910) 343-9653

PROJECT
NHRMC DECK
 2120 SOUTH 17TH STREET
 WILMINGTON, NC
 LANDSCAPE PLANS

CONSTRUCTION SET

DATE: 02/02/2017

PHASE:

JOB NUMBER: 680-04

DESIGNED BY: MLD

DRAWN BY: MAS

CHECKED BY: JWM

SHEET TITLE: PLANTING PLAN

SHEET NUMBER: 1.1

OF 1 SHEETS